

Studio Louisville

Transportation

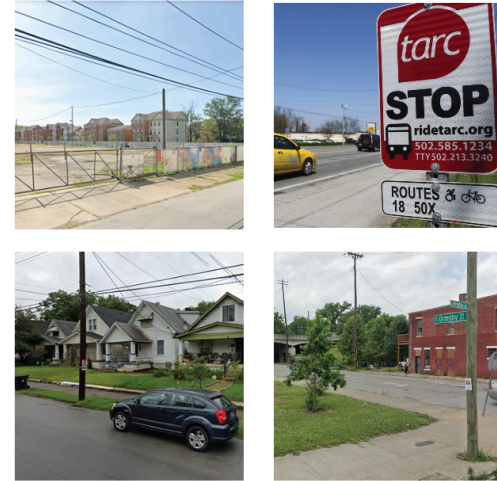
Stewart Campbell, Ryan Smith, Bryce Emerson



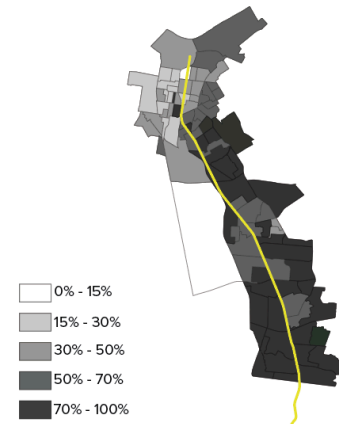
Analysis

This project looks at transportation along the Preston Highway Corridor. Specifically, this transportation study is looking at mode of transportation to work, public bus usage and infrastructure, and pedestrian collisions at a block group level. Multiple of these maps will look at fatal pedestrian collisions within the corridor as well as specifically on Preston. As well, the other maps will look at mode of transportation to work to compare this to bus ridership and stops per population.

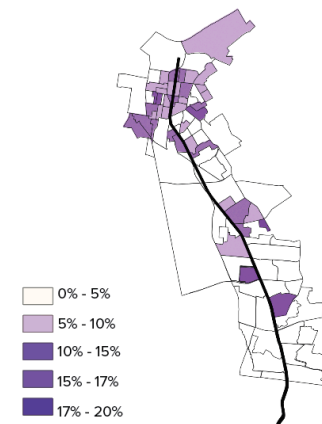
Photos



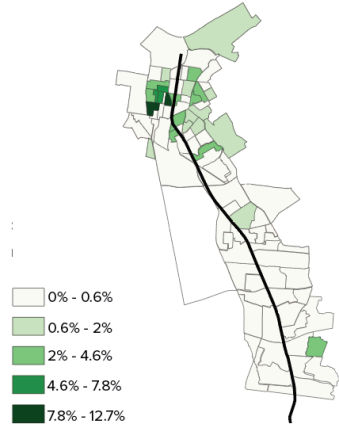
Percentage of people who drive to work



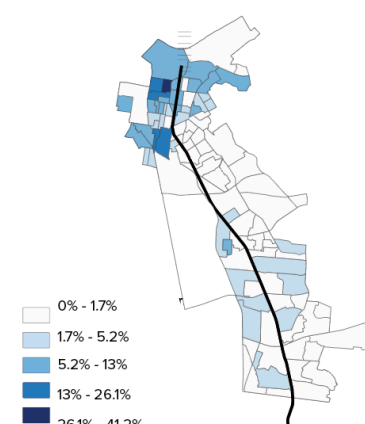
Percentage of population who ride the bus to work



Percentage of population that bike to work



Percentage of population who walk to work



Pedestrian collision deaths per population

